

PLAYBILL

COGER THEATRE

The Secret



Garden

STREAMED COMMAND PERFORMANCE

ENJOY THE SHOW!



 MSU.COAL  @MSU_COAL  MSU.COAL

CRAIG HALL 106 • 417.836.5247
coal.missouristate.edu



College of Arts & Letters
Uniting Passion and Creativity

ART+DESIGN • COMMUNICATION • ENGLISH • MEDIA, JOURNALISM & FILM • MODERN & CLASSICAL LANGUAGES
MUSIC • THEATER & DANCE *INTERDISCIPLINARY PROGRAMS:* ELECTRONIC ARTS • MUSICAL THEATER



AIDS PROJECT OF THE OZARKS

Prevention. Testing. Care.

Walk-in testing for HIV, Hep C and STIs, along with safer-sex supplies.

APO Main Office

1636 S. Glenstone, Suite B

Walk-in Testing:

Mon, Tues, Thurs, & Friday

9am-Noon and 1-3pm

www.apo-ozarks.org

417-881-1900

APO Downtown

303 Park Central West

Walk-in Testing:

Friday & Saturday

6pm-10:30pm

STARRING

THE WORLD'S FINEST FROZEN CUSTARD
MADE FRESH HOURLY™

Andy's[®]
Frozen Custard
★ SINCE 1986 ★



eatandys.com f t i p

SERVING 6 LOCATIONS IN SPRINGFIELD!



**Missouri
State**

DEPARTMENT OF THEATRE AND DANCE
and
MUSICAL THEATRE PROGRAM
present

The Secret Garden

Book and Lyrics by MARSHA NORMAN

Music by LUCY SIMON

based on the novel by FRANCES HODGSON BURNETT

Original Broadway Production Produced by:
Heidi Landesman

Rick Steiner, Frederic H. Mayerson, Elizabeth Williams
Jujamcyn Theatres/TV ASAHI and Dodger Productions

Originally produced by the Virginia Stage Company, Charles Towers, Artistic Director

SCENIC DESIGNER
MICHELLE HARVEY

LIGHTING DESIGNERS
**LILLIAN HILMES
MICHEAL FOSTER**

COSTUME DESIGNER
ABAGAIL M. JONES

SOUND DESIGNER
LEVI MANNERS

VOCAL DIRECTOR
ANN MARIE DAEHN

TECHNICAL DIRECTOR
CHRIS DEPRIEST

MARKETING DIRECTOR
MARK TEMPLETON

CONDUCTOR
CHRISTOPHER KELTS

STAGE MANAGER
LIBBY CASEY

CHOREOGRAPHER
AZARIA HOGANS

MUSIC DIRECTION BY
HEATHER CHITTENDEN-LUELLEN

DIRECTION BY
ROBERT WESTENBERG

SPRINGFIELD, MISSOURI
SEPTEMBER 15–18, 2020
COGER THEATRE
PRODUCTION STREAMED THROUGH SHOWTIX4U.COM

CAST

LILY.....	ANNA PENNINGTON
MARY LENNOX.....	BROOKE VERBOIS
MRS. MEDLOCK.....	McKENNA HARVEY
DR. NEVILLE CRAVEN.....	ZACH GREER
ARCHIBALD CRAVEN.....	HAYDEN HART
MARTHA.....	CAITLIN PALMISANO
BEN WEATHERSTAFF.....	CHAPMAN BLAKE
DICKON.....	NATHAN SALTER
COLIN.....	MOLLIE-CLAIRE MATTHEWS
JANE/NURSE/SERVANT.....	SKYE PALMER
WILLIAM/SERVANT.....	CHRIS MELTON
BETSY/SERVANT.....	KATHERINE LYNCH
ROSE LENNOX/DREAMER.....	MARY KIM
CAPTAIN ALBERT LENNOX/DREAMER.....	EVAN LANGSTON
ALICE/DREAMER.....	ISOBEL RAMSEY
LIEUTENANT WRIGHT/DREAMER.....	WYATT LYSENKO
LIEUTENANT SHAW/DREAMER.....	JAKE LUELLEN
MAJOR HOMES/DREAMER.....	ISAAC WILLIAMS
CLAIRE HOLMES/DREAMER.....	RACHEL HASELHORST
MAJOR SHELLEY/DREAMER.....	PATRICK STURM
MRS. SHELLEY/DREAMER.....	KATIE KRASOVEC
MRS. WINTHROP/DREAMER.....	COURTNEY LAUSTER
AYAH/DREAMER.....	SHAYNA RIVES
FAKIR/DREAMER.....	NOEL ALVARADO

UNDERSTUDIES

FOR THE ROLES OF MARY, COLIN, JANE/NURSE, BETSY - JOSIE ROSE HAND

FOR THE ROLES OF LILY, ROSE, AYAH – ALINE O’NEILL

FOR THE ROLES OF MRS. MEDLOCK, MRS. WINTHROP, CLAIRE HOLMES - ALLEGRA SCHAEFFER

FOR THE ROLES OF MARTHA, ALICE, MRS. SHELLEY - DARBY VINCENT

FOR THE ROLES OF NEVILLE CRAVEN, ALBERT, LT SHAW, LT WRIGHT, WILLIAM - JOEY MYERS

FOR THE ROLES OF DICKON, BEN, FAKIR, MAJ HOLMES, MAJ SHELLEY – DECLAN RHODES

FOR THE ROLE OF ARCHIBALD CRAVEN – CHRIS MELTON

THE SECRET GARDEN is presented by arrangement with

Concord Theatricals. www.concordtheatricals.com

Get Social!

Follow us for exclusive production content



/msutheatreandance



@msutheatreandance



/msutheatreandance



msutheatreandance

Missouri
State.

DEPARTMENT of
THEATRE AND DANCE

SYNOPSIS OF SCENES

ACT ONE

Opening:

- “Opening Dream” Lily, Fakir, Mary & Company
India
- “There’s a Girl” Company
The Library at Misselthwaite Manor
A Train Platform in Yorkshire
The Door to Misselthwaite Manor
- “The House Upon the Hill” Company
Mary’s Room
The Gallery
- “I Heard Someone Crying” Mary, Archibald, Lily & Company
- Scene 1: Mary’s Sitting Room**
- “A Fine White Horse” Martha
- Scene 2: The Ballroom**
- “A Girl in the Valley “ Lily, Archibald & Dreamers
- Scene 3: In the Maze/The Greenhouse**
- “It’s a Maze” Ben, Mary & Dickon
The Edge of the Moor
- “Winter’s on the Wing” Dickon
- “Show Me the Key” Mary & Dickon
- Scene 4: Archibald’s Study**
- “A Bit of Earth” Archibald
- Scene 5: The Gallery**
- “Storm I” Company
- “Lily’s Eyes” Archibald & Neville
- Scene 6: The Hallway**
- “Storm II” Mary & Company
- Scene 7: Colin’s Room**
- “Round-Shouldered Man” Colin
- Scene 8: On the Grounds/The Door to the Garden**
- “Final Storm “ Company

There will be a ten minute intermission.

The Secret Garden ORCHESTRA

featuring members of the MSU Symphony Orchestra

Conductor – Dr. Christopher Kelts

Keyboards – Parker Payne, Heather Luellen

Violin – Santiago Salazar Simmonds, Aleksis Zarins

Viola – Zoe Barnes; Cello – Jessica Hunt; Flute/Piccolo – Carla Wootton

Oboe/English Horn – Julian Salazar Zuluaga

Clarinet/Bass Clarinet – Bailee Schobert; Trumpet – Hyejin Yi

Horn – Joshua Olson, Loren Broaddus; Bass – Riley Robison

Percussion – Richard Collister, Chi En Wong

Keyboard programming by KeyboardTEK

ACT TWO

Scene 1: The Tea Party/The Other Side of the Door

“The Girl I Mean to Be” Mary and Company

Scene 2: Archibald’s Dressing Room

“Quartet” Archibald, Neville, Rose & Lily

Scene 3: Colin’s Room

“Race You to the Top of the Morning” Archibald

Scene 4: The Greenhouse

“Wick” Dickon & Mary

Scene 5: Colin’s Room

“Come to My Garden” Lily & Colin

Scene 6: In the Maze/The Garden

“Come Spirit, Come Charm” Mary Martha, Dickon
Fakir, Ayah, Lily, & Company

“A Bit of Earth” (reprise) Lily, Rose, & Albert

Scene 7: The Library

“Disappear” Neville

Scene 8: Mary’s Room/Paris

“Hold On” Martha

“Letter Song” Mary & Martha

Scene 9: Archibald’s Rooms in Paris

“Where in the World” Archibald

“How Could I Ever Know” Lily & Archibald

Scene 10: The Garden

Finale Company

-END-



 **Missouri State** | DEPARTMENT of THEATRE AND DANCE

Conservatory training.
Liberal arts setting.

BFA in Acting, Dance, Design/Technology/
Stage Management and Musical Theatre

BA and **BS** in Dance, Theatre Studies

BSEd in Speech and Theatre Education

Connect with us:

- 🌐 MissouriState.edu/Audition/TheatreAndDance
- 📞 417-836-4400 | ✉️ TheatreAndDance@missouristate.edu
- 📺 MSUTheatreDance

*Arabic - Chinese - French - German - Greek - Hindi - Italian
Japanese - Korean - Latin - Portuguese - Russian - Spanish - Swahili*

EXPLORE

LANGUAGES

A little language can go a long way.
Discover new possibilities in Missouri
State language courses.

REGISTER ONLINE AT MY.MISSOURISTATE.EDU



WHO'S WHO IN THE COMPANY

Noel Alvarado (*Fakir/Dreamer*) Lewisville, TX. Noel is a sophomore BFA Musical Theatre Major. He was most recently seen in the Ensemble of Spectra Theatre Co.'s production of *Head Over Heels*. At Grapevine High School, Noel was seen as Jack Kelly in *Newsies: The Musical*, and The Baker in *Into the Woods*.

Chapman Blake (*Ben Weatherstaff*) Grapevine, TX. Chapman is a senior BFA Musical Theatre major. His previous credits from Missouri State University include Zach/Fight Captain in *bare: A Pop Opera*, Asparagus in *Cats*, and Jud Fry in *Oklahoma! In Concert*. He has also been seen with Spectra Theatre Co. as King Basillius in *Head Over Heels*, Uptown Players as Frank/Ensemble in *Priscilla Queen of the Desert*, and Brick Road Theatre as Junior Mister in *The Cradle Will Rock*.

Zach Greer (*Dr. Neville Craven*) Overland Park, KS. Zach is a senior BFA Musical Theatre major. At Missouri State University, Zach has been seen as Will Parker in *Oklahoma! In Concert*, Bustopher Jones/Gus the Theatre Cat in *Cats*, Priest in *bare: A Pop Opera*, and Raphael in *Amélie*. He has also been seen with Tent Theatre as Agent Dollar in *Catch Me if You Can*. Zach is a recipient of the Leslie Irene Coger Scholarship, and the Robert Gilmore Scholarship.

Josie Rose Hand (U/S Colin, Mary) Augusta, KS. Josie Rose is a junior BFA Musical Theatre and BS Dance major. Previously at Missouri State University, Josie Rose was seen as Ensemble in *Oklahoma! In Concert*. Josie Rose has also been seen as Ensemble (U/S Philoclea) in Spectra Theatre Co.'s production of *Head Over Heels*, Teen Intern in Music Theatre Wichita's production of *Freaky Friday*, and Millie Dillmount/Choreographer in Augusta High School's production of *Thoroughly Modern Millie*.

Hayden Hart (*Archibald Craven*) Fort Worth, TX. Hayden is a junior BFA Musical Theatre major. His previous credits from Missouri State University include Old Deuteronomy in *Cats*, and Curly in *Oklahoma! In Concert*. Hayden has also performed with Casa Mañana as Mr. Steven in *Carrie*, and Sweeney Todd in *Sweeney Todd*.

McKenna Harvey (*Mrs. Medlock*) Shawnee, KS. McKenna junior BFA Musical Theatre major. Her previous credits from Missouri State University include Swing in *Cats*, Dancer in *Sightlines Spring Dance Concert*, and Vivian in *Oklahoma! In Concert*. McKenna has also performed with Summit Theatre group as Cinderella in *Into the Woods* and Silly Girl in *Beauty and the Beast*, and with Christian Youth Theatre as Fiona in *Shrek the Musical*.

Rachel Haselhorst (*Claire Holmes*) Belleville, IL. Rachel is a senior BFA Musical Theatre major. Her previous credits from Missouri State University include Bombalurina/Dance Captain in *Cats*. Rachel has also been seen on stage with Tent Theatre as Ensemble in *Grease*, Ensemble/Dance Captain in *Catch Me if You Can*, Janet in *The Drowsy Chaperone*, and ensemble in *Cry Baby: The Musical*. She has also been in the Ensemble of *Newsies: The Musical* at Springfield Little Theatre, and the Teen Ensemble for The Munny Teens. Rachel is a recipient of the MSU Board of Governors Scholarship, and the Tent Theatre David Kerrigan Fly and Ted and Sol Rosen and Elizabeth and Emilian Furtak scholarships.

Mary Kim (*Rose Lennox/Dreamer*) Dallas, TX. Mary is a senior BFA Musical Theatre major. Her previous credits from Missouri State University include Diane Lee in *bare: A Pop Opera*, Ensemble in *Heathers the Musical*, and Ellen in *Oklahoma! In Concert*. She has also been seen at Springfield Little Theatre as a Narrator in *Joseph and*

Experiencing the Medicare Maze?

- *Turning 65 this year?*
- *Confused about Medicare options?*
- *New to the area and need to switch plans?*
- *Concerned about Medicare supplement rate increases?*

If you answered "YES" to any of these questions, you need help navigating the Medicare Maze.

Go from "Maze" to "A-MAZING" with expert guidance from Kyle Insurance Services!



Kyle
Insurance Services



- *More than 35 years experience*
- *Born and raised in the Ozarks*
- *Family owned and operated*
- *Your questions answered by phone or in person*

(417) 881-3880

KyleInsuranceServices.com

1342 E. Kingley St., Suite B
Springfield, MO 65804

Kent@KyleInsuranceServices.com

Adam@KyleInsuranceServices.com

Adam Kyle

Kent Kyle

Not employed by or affiliated with Social Security, CMS or the federal government.

WHO'S WHO IN THE COMPANY

the Amazing Technicolor Dreamcoat, and Branson Regional Arts Council as Virtue in *Anything Goes*.

Katie Krasovec (*Mrs. Shelly/Dreamer*) Dallas, TX. Katie is a junior BFA Musical Theatre major. Her previous credits from Missouri State University include Kate in *Oklahoma! In Concert*, Pit Singer in *Cats*, and Wilma Atkins in *The Rimers of Eldritch*. Katie has also been seen as Ensemble in *Mamma Mia!* with Garland Summer Musicals, Sarah in *Seven Brides for Seven Brothers* with Highland Park High School, and Marian in *The Music Man Jr.* with Preston Center Dance. She is a recipient of the MSU Board of Governors Scholarship.

Evan Miles Langston (*Captain Albert Lennox/Dreamer*) Lee's Summit, MO. Evan is a sophomore BFA Musical Theatre major. He has previously performed with Theatre in the Park as Tommy Djilas in *The Music Man*, and with Christian Youth Theatre as Action in *West Side Story* and Edward Bloom in *Big Fish*.

Courtney Lauster (*Ms. Winthrop/Dreamer*) Springfield, NH. Courtney is a senior BFA Musical Theatre major. Her previous credits from Missouri State University include Tanya Garret in *bare: A Pop Opera*, #46 in *The Wolves* and the Universal Swing in *Cats*. Courtney has also been seen on stage at Tent Theatre as Cha Cha in *Grease*, and Ensemble in *Catch Me if You Can*. She is a recipient of the Stephan Emanuel Tent Theatre Endowment, The Virginia Cox Bussey Scholarship, and the Horatio and Lynne Harrar Scholarship.

Jake Luellen (*Lieutenant Shaw/Dreamer*) Springfield, Mo. Jake is a senior BM Vocal Performance Major. With Missouri State Opera Theatre, Jake has been seen as Florville in *Il Signor Bruschino* and King Kaspar in *Amahl and the Night Visitors*. He is a recipient of the Provost Scholarship and the Tom Chaney Memorial Scholarship.

Katherine Lynch (*Betsy/Servant*) Victoria, TX. Katherine is a junior BFA Musical Theatre Major. Her previous credits from Missouri State University include Ensemble in *Oklahoma! In Concert*, and Choir Member in *Rimers of Eldritch*.

Wyatt Lysenko (*Lieutenant Wright*) New Canaan, CT. Wyatt is a sophomore BFA Musical Theatre major. He has previously been seen as Billy Crocker in *Anything Goes* with New Canaan High School.

Mollie-Claire Matthews (*Colin Craven*) Prosper, TX. Mollie-Claire is a sophomore BFA Musical Theatre major. At Missouri State University, Mollie-Claire was seen in *Oklahoma! In Concert*. Her previous credits include Katherine Plumber in *Newsies: The Musical* with North Texas Performing Arts, Little Sally in *Urinetown* with Oklahoma City University, and Jo March in *Little Women* with North Texas Performing Arts.

Chris Melton (*William/Servant*) Charlotte, NC. Chris is a sophomore BFA Musical Theatre major. At Providence Day School, Chris was seen as Cowardly Lion in *The Wizard of Oz*, and Pippin in *Pippin*. Chris also has credits with Theatre Charlotte as Al Joad in *The Grapes of Wrath*. He is a recipient of the MSU Board of Governors Scholarship.

Aline O'Neill (*U/S Lily Craven, Rose Lennox, Ayah*) Atlanta, GA. Aline is a senior BFA Musical Theatre major. Her previous credits from Missouri State University include Rumbleteazer in *CATS*, Kyra/Dance Captain in *bare: A Pop Opera*, Philomene/Assistant Choreographer in *Amélie*, and Young Republicanette/Dance Captain in *Heathers: The Musical*. Aline has also been seen in the Ensemble of Tent Theatre's *Catch Me if You Can*, *Grease* (U/S Sandy Dumbrowski), *The Drowsy Chaperone*, and *Cry-Baby: The Musical*. She is a recipient of the Cox-Bussey Scholarship, the Leslie Irene Coger Scholarship, and the Out-of-State Fee Waiver.



ClininvestTM
RESEARCH

We Believe...

**TOMORROW'S MEDICINE WILL
BE BETTER WITH YOUR HELP.**



MSU ALUMNI

Working to advance treatment for
migraine, arthritis, and diabetes.

883.7889 [clininvest.com](https://www.clininvest.com)

WHO'S WHO IN THE COMPANY

Caitlin Palmisano (*Martha*) Wheaton, IL. Caitlin is a senior BFA Musical Theatre major. Her previous credits from Missouri State University include Ado Annie in *Oklahoma! In Concert*, Veronica in *Heathers the Musical*, and Maria in the *West Side Story Song Suite*. Caitlin also has credits with Tent Theatre as Rizzo in *Grease*.

Anna Pennington (*Lily Craven*) Bartlesville, OK. Anna is a sophomore BFA Musical Theatre major. Her previous credits from Missouri State University include Jemima in *Cats*, Ensemble in the of *Oklahoma! In Concert*, and Choir Member/ Ensemble in *The Rimers of Eldritch*. Her film credits include Featured Actress in Agusa Altaff's film *Wilderness*, and Emma in Missouri State Film's *Together Afar*. Anna is a recipient of the Provost Scholarship, and the Virginia C Bussey Scholarship in Music and Musical Theater.

Isobel Ramsey (*Alice/Dreamer/U/S Mary Lennox*) St. Louis, MO. Isobel is a senior BFA Musical Theatre Major. At Missouri State University, Isobel has been seen as a Tap Dancer in *Sightlines: Spring Dance Concert*, and Ensemble in *Oklahoma! In Concert*. Isobel has also been seen at Springfield Little Theatre as Dreamer in *The Secret Garden*. She also produced, directed, and performed in *Roles We'll never Play: A Miscast Cabaret* and *The Pink Dress: A Cabaret* with her own organization, Cabarets for Charity.

Declan Parker Rhodes (*U/S Ben, Dickon, Fakir, Major Holmes, Major Shelley*) Ozark, MO. Declan is a senior BFA Musical Theatre Major. His previous credits from Missouri State University include Pouncival in *Cats*, Ensemble in *bare: A Pop Opera*, and Lucien in *Amélie*. He has also been seen as Dametas in *Head Over Heels* and Ernst in *Spring Awakening* with Spectra Theatre Co. Declan is a recipient of the George W. and Bernardene B. Oliver scholarship through

the Missouri State University Dept. of Theatre and Dance.

Shayna Rives (*Ayah/Dreamer*) Ringwood, NJ. Shayna is a sophomore BFA Musical Theatre major. She was previously seen at Missouri State University in the Ensemble of *Oklahoma! In Concert*. Shayna's previous credits include Ensemble in *Sister Act* with BroadwayWorkshops, Velma in *Chicago* and Meredith in *Five Women Wearing the Same Dress* with Lakeland Regional High School.

Nathan Salter (*Dickon*) Fort Worth, TX. Nathan is a junior BFA Musical Theatre Major. His previous credits from Missouri State University include Quaxo in *Cats*, Ensemble in *Oklahoma! In Concert*, and *bare: A Pop Opera*. Nathan also has credits with Tent Theatre as Eugene in *Grease*. He has also been seen as Tony in *West Side Story* with Plaza Theatre Co., Otto in *Spring Awakening* with Spectra Theatre Co., and Prentiss in *Peter and the Starcatcher* with Onstage in Bedford. Nathan is a recipient of the Board of Governors Scholarship.

Allegra Schaeffer (*U/S Mrs. Medlock, Mrs. Winthrop, Claire Holmes*) Saint Charles, MO. Allegra is a senior BFA Musical Theatre and BS Dance major. Her previous credits from Missouri State University include Coricopat (*U/S Jellylorum, Jennyanydots*) in *Cats*, Suzanne/Dance Captain in *Amélie*, Ensemble in *Oklahoma! In Concert*, and Dancer in the 2018 and 2019 *Spring Dance Concerts*. Allegra was also seen as a Muse in *Wonder of The World*, an MSU Studio Series production. She has also been seen at the Ashley Goos and Contemporary Dance Theatre as a Dancer in the *Cincinnati Dance Festival*, and at Southeast Summer Theatre Institute as Paula Abagnale/Flight Attendant in *Catch Me if You Can*. Allegra is a recipient of the Inclusive Excellence Leadership Scholarship from MSU, and the Anne Page Scholarship and Virginia Bussy Scholarship from Missouri State Department of Theatre and Dance.

your
Missouri StateTM
B O O K S T O R E

More than just books

Be the **First in the Know** by signing up to receive emails about exclusive specials.

Don't have time to shop in-store?
Shop online 24/7 at

[www.MissouriStateBookstore.com!](http://www.MissouriStateBookstore.com)

Bookstore Hours of Operation

Monday–Thursday

Friday

Saturday

Sunday

7:30 AM–6:30 PM

7:30 AM–5:30 PM

12:00 PM–4:00 PM

CLOSED

Visit our affiliate locations:

BearNecessities C-Store
1905
PawPrints
Maroon Nation

JQH Team Store
BearStop C-Store
Boomer's C-Store

TM



WHO'S WHO IN THE COMPANY

Patrick Sturm (*Major Shelley/ Dreamer*) Overland Park, KS. Patrick is a junior BFA Musical Theatre major. His previous credits from Missouri State University include *Swing in Cats*, *Fred in Oklahoma! In Concert* and *Dancer in the 2019 Fall Dance Concert*. Patrick has also been seen as *Ren in Footloose* with Springfield Little Theatre, and *The Beast in Beauty and the Beast* with Shawnee Mission South. He is a recipient of the Presidential Scholarship.

Brooke Verbois (*Mary Lennox*) Burleson, TX. Brooke is a senior BFA Musical Theatre major. She has previously been seen at Missouri State University as *Tumblebrutus in Cats*, *Ensemble in bare: A Pop Opera*, *Young Amélie in Amélie*, and *Betty Parris in The Crucible*. Brooke has also performed with Tent Theatre as *Brenda Strong in Catch Me if You Can*. She has also been seen with Casa Mañana as *Rachel Jackson in Bloody, Bloody Andrew Jackson*, *Ensemble in Striking 12*, and *Dance Ensemble in Big Fish*. Brooke is a recipient of the Best Supporting Actress Column Award.

Darby Vincent (*U/S Martha, Alice, Mrs. Shelley*) Springfield, MO. Darby is a sophomore BFA Musical Theatre major. She has previously been seen as *Ensemble in Missouri State University's production of Oklahoma! In Concert*. Darby has also been seen as *Katherine Plumber in Newsies: The Musical* at Springfield Little Theatre, *Rosa Bud in The Mystery of Edwin Drood* at Springfield Contemporary Theatre, and *Mrs. Johnstone in Blood Brothers* at Central High School. She is a recipient of the Board of Governors Scholarship from Missouri State University, and the Youthfest Talent Showcase Scholarship from Springfield Little Theatre.

Isaac Williams (*Major Holmes/Dreamer*) Junction City, KS. Isaac is a senior Vocal Music Education major with a Theatre minor. His previous credits from Missouri State University include *Henry in The Gift of the Magi* and *John Styx in Orpheus*

in the Underworld with the MSU Opera Workshop. At Junction City Little Theatre, Isaac was seen as *Donkey in Shrek the Musical*, *Wilbur in Charlotte's Web*, and *Seaweed in Hairspray*. Isaac is a recipient of the Jack J. Isgur Foundation Scholarship and the Resident Assistant Community Development Award.

Libby Casey (*Stage Manager*) Kansas City, MO. Libby is a senior BFA Design, Technology, and Stage Management major with an emphasis in Stage Management. Libby previously served as the Stage Manager for the Missouri State University productions of *Crimes of the Heart*, *Sightlines: Spring Dance Concert*, and *She Stoops to Conquer*. She also served as the Assistant Stage Manager for Missouri State University's production of *Heathers the Musical* and the 2019 Tent Theatre season. With Tabula Rasa, Libby served as the Stage Manager for *Hand to God*. Libby is a recipient of the Theatre Regents Scholarship.

Lillian Hilmes (*Co-Lighting Designer*) Springfield, MO. Lillian is a junior BFA Design, Technology, and Stage Management major. At Missouri State University, Lillian has served as the Lighting Designer for *Crimes of the Heart*, and Assistant Lighting Designer for *bare: A Pop Opera*. Lillian also serves as the Properties Assistant for the 2019 Tent Theatre Season. She has also served as the Lighting Designer for Spectra Theatre Co.'s production of *Spring Awakening*. Lillian is a recipient of the Board of Governors and Bright Flight Scholarships, and the Westphal Tent Theatre Award.

Taryn Huffman (*Assistant Stage Manager*) Powell, OH. Taryn is a BFA double major in Musical Theatre and Stage Management. Her previous credits from Missouri State University include Assistant Properties Master for *Picnic*, and *Ensemble in Oklahoma! In Concert*. Taryn also has credits with Theatre Columbus State as *Tilly Evans in She Kills Monsters*, *Evolution*

Great food. Great service.
Your neighborhood.



Your Neighbor Since 2000

Bambinos on Delmar

1141 East Delmar

417-862-9999

Bambinos on Battlefield

2810-D East Battlefield

417-881-4442

www.BambinosCafe.com

Full menus available online.

WHO'S WHO IN THE COMPANY

Theatre company as Ensemble/Dance Captain in *Priscilla Queen of the Desert*, and Stagedoor Manor as Mopsa in *Head Over Heels*. She is a recipient of the Provost Scholarship from Missouri State University.

Abigail M. Jones (*Costume Designer*) Kirkwood, MO. Abigail is a spring 2020 graduate in the BFA in Design, Technology, and Stage Management with an emphasis in Costume Design. She has previously served as the Costume Designer for Missouri State University's productions of *The Comedy of Errors*, *The Rimers of Eldritch*, *The Wolves*, and *The Crucible*. Abigail also served as the Costume designer for the Missouri State University film *Cult for a Day*. At Stagedoor Manor, Abigail served as the Costume Designer for *Leap of Faith*, *Cabaret*, and *Honk!*.

Riley Lathrom (*Assistant Scenic Designer*) Kansas City, MO. Riley is a junior BFA Design, Technology, and Stage Management major. At Missouri State University, Riley has previously served as the Assistant Scenic Designer for *Cats* and the Assistant Stage Manager for *The Rimers of Eldritch*. With Tabula Rasa, Riley served as the Scenic Designer for *Hand to God* and *Trail to Oregon*. She is a recipient of the Provost and Theatre Regents Scholarships.

Levi Manners (*Sound Designer*) Parsons, KS. Levi is a senior BFA Design, Technology, and Stage Management major. His previous credits from Missouri State University include Sound Design/Mixer for *Cats* and *bare: A Pop Opera*, A1 for *Amélie*, and A2 for *Oklahoma! In Concert*. Levi also served as the Sound Engineer for Tent Theatre's 57th season. At Springfield Contemporary Theatre, Levi served as the Sound and Projection Designer for *Oppenheimer*, and the Sound Designer for *A Curious Incident of the Dog in the Night Time*. He also served as the Sound Designer for UCYA's production of *Parliament Square*.

Elona Ratcliff (*Assistant Scenic Design*) Washington, MO. Elona is a senior BFA Design, Technology, and Stage Management major. At Missouri State University, Elona has previously served as the Co-Scenic Designer for *Crimes of the Heart*, Assistant Scenic Designer for *bare: A Pop Opera*, Assistant Projections for *Amélie*, Costume Designer for *Spring Dance Concert: Parts of the Whole*, Properties Master for *The Diary of Anne Frank*, and Assistant Properties for *A Little Night Music*. She also served as Co-Scenic Designer for Spectra Theatre Co's production of *Spring Awakening*.

Cole Trumble (*Properties Master*) Grain Valley, MO. Cole is a senior BFA Design, Technology, and Stage Management major. At Missouri State University he has served as the Properties Master for *Crimes of the Heart* and *bare: A Pop Opera*. His other credits from Missouri State University include Assistant Properties Master for *She Stoops to Conquer* and Scenic Designer for *The Wolves*. At Utah Festival Opera and Musical Theatre, Cole has served as the Properties Artisan for *Marriage of Figaro*, *Mary Poppins*, and *Newsies: The Musical*. Cole is a recipient of the Presidential Scholarship and the Bright Flight Scholarship.

Isabelle Zurcher (*Assistant Stage Manager*) St. Louis, MO. Isabelle is a junior BSED Speech and Theatre Education major. She was most recently seen as Dance Ensemble in *Meet Me in St. Louis* with Christ Memorial Productions, and as the Stage Manager in *Our Town* with Oakville High School Theatre Company. Isabelle also served as the Student Director/Stage Manager for the Oakville High School Theatre Company's production of *The Seussification of Romeo and Juliet*. She is a recipient of the Board of Governors and Theatre Regents Scholarships.

HuVee®

EMPLOYEE OWNED

Supporting our local Theatre Organizations

THEATRE and DANCE FACULTY

Department Head
Joseph Price

Faculty.....	Kyle Aho, Telory Arendell, Ruth Barnes Lisa Brescia, Micheal Foster, Jennifer Collins Hard Kurt Heinlein, Christopher Herr, Azariah Hogans Michelle Harvey, Carol Maples, Zipporah Peddle Kyle A. Thomas, Sarah Wigginn Robert Westenber, Cynthia Winstead, Sarah Wilcoxon
StaffChris DePriest Kathleen Hains, Anna Hunt, Heather Luellen Samantha Morrow, Mark Templeton
Per Course FacultySusan Bennett, Angi Black Richard Nebel, Jon Herbert, Ed Swidey
Graduate Assistants	Mallory Maggi, Ariana Hettland-Purna Kylie Wheeler
Part-Time Staff.....	Cathy McFall, Emma Wang

CREDITS

KARA LIBBY, MADALYN WHEELER, MATTHEW KIEWIET, SADIE WESTBROCK, MEGAN MARKS, MARK PUTMAN, MELINDA ROBINSON, SPRING 2020 COSTUME AND SCENE SHOP CREWS, SHAWN WAHL, BIO EDITORIALIST MALLORY MAGGI, MISSOURI STATE UNIVERSITY NEWS SERVICES, MISSOURI STATE UNIVERSITY PRINTING SERVICES, SPRINGFIELD CONVENTION AND VISITORS BUREAU, KSMU-BROADCAST SERVICES, RANDY STEWART, SPRINGFIELD CONTEMPORARY THEATRE, LANDERS THEATRE, LINDA PALMISANO

THE SECRET GARDEN

Running Crew

Lighting Board Operator	Lillian Hilmes
Sound Board Operator	Avery Brown
Follow Spot Operators	Kit Foulke Annie Oberholtzer, Sarah Pendergrass
Wardrobe	Izella Laury, Dolin Ituarte Kenzie Ream, Allison Sexton
Fly Crew.....	Toni St. Godard
Assistant Stage Manager	Lisa Sandoli
Camera Operators	Todd Fortenberry, Michael Jones
Video Switcher Operator.....	Patrick Wilson

PRODUCTION STAFF

Producer	Joseph Price
Managing Director	Mark Templeton
Production Manager	Jennifer Collins Hard
Scene Shop Supervisor	Anna Hunt
Sound Adviser	Ed Carson
Properties Master	Cole Trumble
Vocal Director	Ann Marie Daehn
Asst Director for the original production	Zipporah Peddle
Assistant Properties Masters	Jack Johnson Amara Marshal
Assistant Stage Managers	Taryn Huffman Isabelle Zurcher
Assistant Lighting Designer.....	Lillian Hilmes
Assistant Scenic Designers	Riley Lathrom Elona Ratcliff
Costume Shop Supervisor.....	Samantha Morrow
Drapers	Samantha Morrow, Cynthia Winstead
Costume Shop Assistants	Bailey Doran, Robyn Gill Cassidy Hayden, Kestrel Jurkiewicz-Miles Hannah Oldham, Isobel Ramsey
Marketing Assistants	Molly Beshore Christian Calhoun, Steven Horn, Emma Keifer Hailey Hance, Hunter Vicars, Matt Walter

Scene Shop Crew.....	THE251 Callie Altepeter, Alyssa Gaul, Anna Pennington Nathan Salter, Sadie Westbrook, Christian Calhoun Ethan Gambriel, Kayla Rehder, Anna Stimac Hayden Hart, Gea Henry, Mallory Koenigseder Emily Kremer, Marshall Hancock, Patrick Sturm Sean Carey, Caitlin Palmisano Alexa Pfeiffer, Haley Thomas, Kathryn Twente
Scene Shop Assistants.....	Angelina Adams, Libby Casey Dekayla Craig, Lauren Fahrmer, Lillian Hilmes Amberlynn Lewis, Levi Manners, Hailey Panek Matthew Raymer, Anthony Saviello, Jackson Spencer Cole Trumble, Claire Visnovske
Lighting Crew	THE255 Isabelle Bates, Kodie Brown, Sara Bryant, Denali Ford Dylan Fuller, Alyssa Gaul, Rachel Haselhorst Taryn Huffman, Phillip Kanke, Clayton Kettelkamp Rylan Lavery, Breanna Mack, Joseph Myers Emma Reinagel, John Spence, Tanner Thiessen
Costume Shop Crew	THE261 Angelina Adams, Jeremy Ashley, Morgan Ball Cara-Lee Crow, Nicholas Kinder, Skye Palmer Caitlin Palmisano, Christian Calhoun, Hailey Hance Declan Rhodes, Fiona Ross, Callie Altepeter Mallory Koenigseder, Emily Smith, Kathryn Thomas Megan Akers, Lillian Hilmes, Haley Reynolds Sydney Smith

WARNING

The photographing, sound or video recording of any performance broadcast without written permission of the management is prohibited by law.

SPECIAL SERVICES

To request an accommodation due to a disability, please contact the Theatre and Dance Department at least one week in advance.

NAST

*Accredited Institutional Member of the
National Association of Schools of Theatre.*

Exclusive Broadcast Media Partner



College of Arts & Letters

Ekklesia House

626 East Grand
Across from Bear Park South



A Gathering Place where **all** are welcome

Free Sunday Night Dinners
Free WiFi and Printing
Great Coffee
Backyard BBQs
Snacks, Games, TV & Movies
Meeting & Study Group Space
A Place to Find Your People

Open Hours:
Sunday 5pm – 10pm
Monday 10am – 10pm
Tuesday 10am – 10pm
(worship at 8, PSU317)
Wednesday 10am – 10pm
Thursday 10am – 10pm
Friday 10am – 5pm
Saturday by Appointment

Building a Progressive Community @ MSU **Join Us!**

www.ekklesiamsu.org 417.865.8711

Black Lives Matter.

Jesus Was Born a Brown Skinned Refugee.

God Loves Everybody. No Exceptions.

Religious Diversity Makes the World Better.

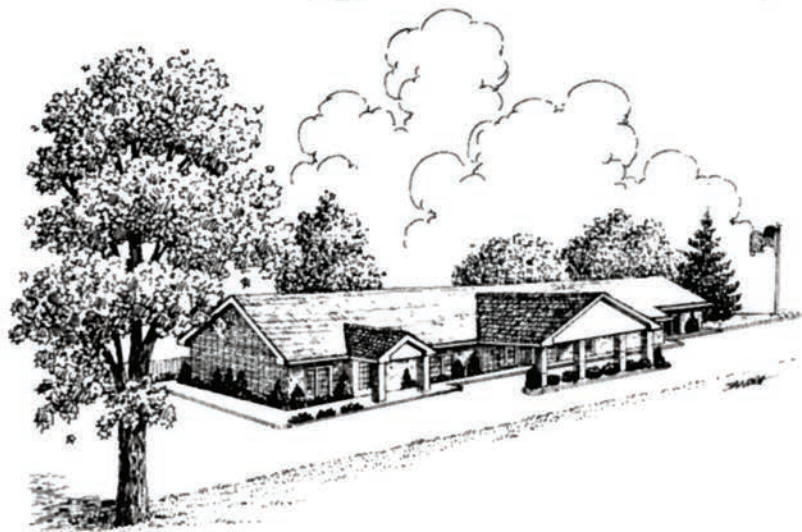
Faith and Science are Not Mutually Exclusive.

Loving God is Loving Neighbor.

EKKLESIA

God Centered | Justice Focused | Fully Inclusive

Gorman-Scharpf Funeral Home, Inc.



*Brentwood Chapel - University Chapel
Crematory - Columbarium
1947 E. Seminole • 886-9994*

Licensed Funeral Directors of Distinction:

Robert Lohmeyer
Don R. Lohmeyer
Heather K. Howell

W. Bruce Howell



SELECTED
Independent
FUNERAL HOMES

Harley R. Williams
Clint W. Mease
Angela N. Collins

Nichole Bauer

Also Consider

The Monument Shoppe

334 E. Chestnut Street • 865-0934

Also owned by Gorman-Scharpf

Locally owned and operated for over 50 years.



Join us for a General Education class!

The English Department offers 14 choices for General Education classes,
from ENG 110: Writing I to writing to literature.

Add a major or minor!

We offer four majors:

English Education • English-Creative Writing • English-Literature • Professional Writing

And these minors pair with any major:

Creative Writing • English • ESOL • Folklore • Linguistics • Technical Writing • TESOL

Check out these jobs!

Graduates with degrees from the English Department hold these job titles:

advertising copywriter	magazine editor
advertising executive	medical communicator
archivist/researcher	military cryptolinguist
attorney	museum curator
author	nonprofit professional
book editor	politician
broadcaster	professor/lecturer
community arts professional	public relations professional
corporate manager	publisher
corporate trainer	science writer
document designer	screenwriter
documentation specialist	social media coordinator
editor	social services professional
educator (high school and college)	speech writer
food writer	staff writer
government official	technical writer
grant writer	television and radio producer
healthcare professional	travel writer
journalist/columnist/reporter	user experience analyst
librarian	web developer
literary agent	writer

Write on!

For more information, visit us online at english.missouristate.edu

BRAVO!

Thanks to these generous donors and friends for supporting the Department of Theatre and Dance:

Dr Stephen R Adams
JoAnn Ashe
Khira L Auerbach
Alvin L Baker
Jane Baker
William A Baker
Leslie Ballew
Kristoffer Barefield
Ruth E Barnes
Jim Billings
Judy Billings
Dr Byrne D Blackwood
Margaret P Blackwood
Joyce Bowman
Dr Robert H Bradley
Lori Brockhaus
Linda Brooks-Hart
Nancy Brown-Dornan
Dr Russell N Carney
Kevin L Carter
Scott W Carter
Chesterfield Eyeworks
Michael L Chittenden
Sharan G Chittenden
Clinvest Research
Brian Collins
Patricia A Cosgrove
Holly P Crow
Ethel Curbow
Lt Col (ret) Stanton L Curbow
Jessica Lauren Dahlheimer
Tessa Ann Devine
John D Dickinson, Jr

Pamela S Dickinson
Jeffrey R Diehl
Judith C Diehl
Dr Randy K Dillon
Randall O Doennig
Thomas J Dornan
Pamela Downs-Hoover
Lindy M Elliott
Dr Agena L Farmer
Lindsay Nicole Farrow
Linda Fowler
Jennifer S Frazier
Fun Publications Inc
Daniel L Furtak
Emily E Furtak
Debra L Sylvester
Sarah Lynne Gerling
Martha A Goodall
Sara W Guthrie
Roy P Hamlin
Kelsey D Hammontree
Kathryn M Harter
Dan Hasty
Dr Kurt G Heinlein
Linda D Henderson
Marvin W Henderson
Joe Hills
Linda D Hills
Sue Hittle
Kimberly A Holaday
Michael R Holaday
Linda Virdon Holmes
Dr William H Holmes

Fredric M Homan
Trudie A Homan
Richard E Hoover
John Hopkins
Karen Hopkins
S Price Horn
Shannon M Horn
Dr Shirley M Huffman
Nicole C Hunt
Mattie Jacobson
Cleo Jatón
Herman J Johansen
Alan Jones
Shellie Jones
Stacy Joyce
Linda Jurkiewicz
James W Kaiser
KBFL
Krista A Kelam
Elizabeth A Kellner
Sidney E Kendall
Denise T Kettering
Lance Kettering
Barbara Kilpatrick
Dr David R Kilpatrick
Royann Kimberlin
Tracy K Kimberlin
Dr Janis L King
Mila K Kirkland
Carolyn K Krause
Mike Krause
Nathan D Kreher
KTXR


Monte J Kuklenski
Valerie G Kuklenski
KWTO AM/FM
Kyle Insurance Services
Nancy Ladendecker
Lairamore Giving Fund
Molly Lairamore
William A Lairamore
Donald E Lape
Rebecca A Lape
Jack Laufer
Charles O Letterman
Andrew Long
Dr David S MacKenzie
Dr Mary Beth Mann
Dr C J Maples
Bena M Marrone-Baker
Linda Marshall
Stanley G Marshall II
Sally A Mason
Jami S Masters
Randy D Masters
Dr Daniel B Matthews
Dr Gordon McAfee
John W McAlear
Sally Jane McAlear
Dylan McGehee
Philip D McGuire
Suzanne M McKenney
James T McKenzie
Gregory L McManus
Judy McManus
Mark L McQueary
Ramona F McQueary
Med-Pay Inc
Annette T Melies
Joseph L Melies
Kristen R Melies
Shannon L Metts

Kenneth E Meyer
Carla Miller
Katelyn N Mittler
Robert W Mogel Jr
Joe Mohr
Deborah Claus Moore
Gary Mosby
Cathy Murdock
S Marie Murphree
Patricia L Musburger
Robert B Musburger
Kay Alden Nelson
Vernon R Nelson
Charlotte M Nordyke
Gregory P Onstot
Nancy J Onstot
Stephanie Park
Dr Clyde A Paul
Judith C Paul
David Pavlin
Russell D Pavlin
Penmac Staffing
Katherine Ann Pennington
Eric A Pool
Joy Pool
Thomas J Poss
Joseph Price
Ronda F Price
Ronnie L Price
Mary M Ray
Dale E Reed
Gloria Reed
Sherry K Resh
Nancy I Reynolds
Gary L Rhodes
Melinda Robinson
Zachary Evan Russell
Becky Savage
Brian Savage

Staci Schuhmann
Kay F Scott
David Seidl
Brandt W Shields
Ava G Smith
Dina Spies
Springfield Black Tie
Springfield Business Journal
Ethan J Steimel
Patricia D Strecker
Karen Surgener
Sam Surgener
Eric L Swenson
Edward S Swidey
Kay M Taylor
Phil L Taylor
Mark Templeton
The Old Glass Place
Jordan Thomas
TLC Properties
Harry W Trimble
Theresa L Trimble
David A Trottier
Lesley K Trottier
Marla H Underwood
United Ministries in Higher
Education
UnitedHealth Group
William R Van Wig
Kim Crosby Westenberg
Robert Westenberg
Dr Rick Westphal
Brooke A Wheeler
Kenneth J Wheeler
Marcia L Wheeler
Sarah J Wiggin
Maggie Wilcox
James C Wilson
Joan M Wilson

Join our cast of supporters today at missouristatefoundation.org

Missouri State Foundation



CONSIDERING A MINOR OR DOUBLE MAJOR?

EXPLORE COMMUNICATION PROGRAMS

www.communication.missouristate.edu

COMMUNICATION - CONFLICT AND DISPUTE RESOLUTION

ETHICAL LEADERSHIP - PUBLIC RELATIONS

SOCIO-POLITICAL COMMUNICATION

SPEECH AND THEATRE EDUCATION

**Missouri
State**[™]

**DEPARTMENT of
COMMUNICATION**

YOUR BUSINESS NEWS AUTHORITY



Parson to spend on workforce development, infrastructure

Governor's proposed \$30 billion budget includes \$5 million for OTC advanced manufacturing center

by Mike Cullinan - mcullinan@sbj.net

Delivering his first State of the State address Jan. 15 in Jefferson City, Gov. Mike Parson said he wants to spend nearly \$75 million to advance job-training opportunities for Missouri workers.

are part of the governor's proposed \$30 billion budget for fiscal 2020, which also includes a \$351 million bond package proposal to improve state bridges.

"Cultivating and training our workforce for high-demand jobs and investing in

Supreme Court ruling against Prime sets industry precedent

Federal court determines trucking company can't force arbitration in a class-action suit

by Mike Cullinan - mcullinan@sbj.net and Geoff Pickle - gpickle@sbj.net

The Supreme Court of the United States made a ruling Jan. 15 on a case involving New Prime Inc., setting a precedent that affects more than just the Springfield trucking company.

The Supreme Court's 8-1 ruling prohibits New Prime, dba Prime Inc., from forcing arbitration in a lawsuit involving one of its truck drivers, Prime appealing to the SCOTUS after a decision by lower federal courts.

In the class-action suit filed in 2015, truck driver Dominic Oliveira alleges a Fair Labor Standards Act violation against Prime for failing to pay its apprentices the lawful minimum wage. The SCOTUS ruling means Oliveira's suit can proceed.

In arguing for arbitration, Prime attorneys say Oliveira and other independent contractors should not be exempt from the Federal Arbitration Act. Oliveira had argued that in the nearly century-old



Todd Spenser is skeptical the ruling will change much in employer court acts.

of transportation workers. Prime sought to invoke its authority under the act to initiate arbitration, according to court documents.

Prime General Counsel Steve Crawford said via email while the company respects the Supreme

Court's decision, he called the outcome a "disappointing loss." He said Prime plans to defend its practices in the class-action suit in the lower courts.

"Legally, Prime didn't have any legs to stand on," said Todd Spenser, president of the Owner-Operator Independent Drivers Association Inc. "Clearly the arbitration act did not apply to agreements of employees."



PRINT DIGITAL EVENTS



SUBSCRIBE AT SBJ.NET

Know what it feels like to change a life? We do!

Department of Communication Sciences and Disorders

Audiology, Speech-Language Pathology, Education of the Deaf and Hard of Hearing

Department of Communication
Sciences and Disorders
901 South National Avenue
Springfield, MO 65897
417-836-5368
www.missouristate.edu/csd



Excellent career opportunities in:
medical
educational
private practice settings

Missouri State™

EO/AA/M/F/Veterans/Disability/Sexual Orientation/Gender Identity



DR PEPPER BOTTLING COMPANY

Who's Who in the Department

Telory D. Arendell has a PhD from Stanford University, a Master's Degree from New York University, and a BA from Swarthmore College. She is an Associate Professor at Missouri State University and has published three books: *Dance's Duet with the Camera: Motion Pictures* (2016); *The Autistic Stage: How Cognitive Disability Changed 20th-Century Performance* (2015); and *Performing Disability: Staging the Actual* (2009). Her current book projects include *Pina Bausch's Aggressive Tenderness: Repurposing Theater through Dance* (due out from Taylor & Francis in 2020), and a novel, *Missouri Normal*. Her directing credits include *Le Wilhelm's Cucumbers*, August Strindberg's *Miss Julie*, Dinah Toups' *Totally Red*, Linda Daugherty and Mary Rohde Scudday's *Hard 2 Spel Dad*, and Lanford Wilson's *The Rimers of Eldritch*. Arendell also co-founded Philadelphia's Pig Iron Theatre Company before moving into academia.

Ruth Barnes Professor and Coordinator of the Missouri State University Dance Program. Early in her career, Ruth established a reputation as a performer, choreographer and master teacher of contemporary dance in New York City, where she taught at the Merce Cunningham Studio and the New Dance Group Studios, while working as a freelance dancer. She has choreographed, taught and performed internationally, most significantly in the United Kingdom, France, Switzerland and Taiwan. In Springfield, Ruth has choreographed and created musical staging for the Tent Theatre and at Springfield Contemporary Theatre. She directed *Folding House*, written and performed by Sheila Gordon, with shows in Austin, TX, and on the Edinburgh Festival Fringe. As a choreographer and performer, she has explored mixed media performance, aerial dance, and dance-text pairings, and uses a wide range of music genres in her work. In 2013, Ruth collaborated with five dance artists and three musicians based in Scotland to create *Here, There and Everywhere*, an hour-long solo dance based on the notion of displacement/dislocation; she subsequently performed the work throughout the United States. Ruth is the recipient of a Fulbright Fellowship, Missouri Arts Council grants, and several MSU research grants and fellowships. She serves on the American College Dance Association board, as the Central Region Director. Ruth earned her MFA in Dance/Experimental Choreography from the University of California, Riverside.

Lisa Brescia is a professional actor and teacher who has worked extensively on Broadway, Off-Broadway and regionally. On Broadway, Lisa has recently starred as Heidi Hansen in *Dear Evan Hansen*, Donna Sheridan in *Mamma Mia!*, Elphaba

in *Wicked*, Cleo in Twyla Tharp's *The Times They Are A-Changin'*, Amneris in *AIDA*, and Marion Halcolombe in *The Woman in White*. Favorite regional roles include Tatiana Racon in the world premiere of Ken Ludwig's *A Comedy of Tenors* at the Cleveland Playhouse and the McCarter Theatre, and Anna in John Kolvenbach's *Sister Play* at the Magic Theater in San Francisco. She has been teaching and coaching young actors, as well as seasoned professionals, for many years in New York. In August, 2016, Lisa joined the acting faculty at Missouri State University's Department of Theatre and Dance. She is a proud member of Actor's Equity Association and SAG-AFTRA, and has her MFA in Classical Acting.

Chris DePriest holds an MFA from Southern Illinois University Carbondale. He has served as the Production Manager, Technical Director, and Resident Designer in Tent Theatre for the past eleven years. Some of his most recent scenic designs for Tent include: *Sherlock Holmes: The Final Adventure, Leap of Faith, 110 In The Shade, 42nd Street; Shout, The Mod Musical, The 25th Annual Putnam County Spelling Bee, Joseph and the Dreamcoat, The Miss Firecracker Contest, and Alter Boyz*. Along with his many responsibilities in Tent Theatre, Chris also serves as Technical Director for the Department of Theatre & Dance at Missouri State University. In his free time, Chris also works as a freelance designer for other theatre companies across the nation. Chris would like to thank his wife, Stacy, and his two wonderful daughters for their continued love, support, and laughter.

Micheal Foster is the lighting design professor for the Department of Theatre and Dance at Missouri State University, and is a member of United Scenic Artists, Local USA 829, the union for professional theatrical designers and artists. He has designed the lighting for over 200 productions including designs for ATREK Dance and MADCO in St. Louis; Florida Studio Theatre (LORT D) in Sarasota, FL; Contemporary American Theatre Festival (LORT D) in Shepherdstown, WV; New Theatre in Coral Gables, FL; Utah Musical Theatre in Ogden, UT; Tent Theatre in Springfield, MO; The University of Miami; Wake Forest University; Missouri State University. He holds a Bachelor of Arts in Theatre from the University of Alabama, a Master of Fine Arts in Theatrical Design & Production from Ohio University, and completed his internship at Central St. Martin's College of Art and Design in London, England. His thesis production of *Woyzeck* was selected for display at the 2003 Prague Quadrennial.

RuPaul's
DRAG RACE



MIX
ultralounge

**VIDEO BAR
& STAGE**

Music Video - Karaoke - Drag Shows
Pool Tables - Drink Specials - Theme Nights
RuPaul's Drag Show Live Viewing Parties

springfieldmix.com
1221 e saint louis street, springfield mo

Kathleen Hains holds a BFA and MFA in Theatre Arts from Stephens College and The University of Iowa. Ms. Hains assists Students, Faculty, and Staff in the Department of Theatre and Dance as the Administrative Specialist. Ms. Hains is also involved with Missouri State University's Staff Senate where she works with Public Affairs, Communications, and the Student Government Association. Ms. Hains is a Proud Equity Member as a Stage Manager.

Jennifer Collins Hard is thrilled to join the team at Missouri State. Most recently she served as a faculty member and Production Manager for the Dartmouth College Department of Theater. Additional production management credits include; Director of Production for the Omaha Theater Company, Associate Production Manager for Baltimore Center Stage and Production Manager for Chamber Theatre Productions, a national touring company. Jenn has also worked as a Stage Manager with Virginia Opera Association, Opera Omaha, Opera North, Omaha Symphony, Kansas City Ballet, Kansas City Repertory Theatre, McLeod Summer Playhouse, Dartmouth College, UMKC Conservatory of Music, University of Illinois Summerfest and the Omaha Theater Company. Jenn holds a B.A in Theater from Southern Illinois University Carbondale and an MFA in Stage Management from the University of Missouri Kansas City.

Michelle Harvey (USA 829, MFA) is an Assistant Professor with the Missouri State University Department of Theatre and Dance. She is a member of United Scenic Artists Local 829, a union and professional association for designers, artists, and craftspeople in the entertainment and decorative arts industries. Michelle comes from the Dallas/Fort Worth area where she was a faculty member at the University of Texas at Arlington and designed regionally at Stage West, The Dallas Children's Theater (including 3 national tours), Uptown Players, and Theatre Three among others as well as creating concert events for the Turtle Creek Chorale and Spectacular Senior Follies. Elsewhere, she has designed in Florida, Arizona, Ohio, and Pennsylvania. Her first design in the Springfield area was with Tent Theatre this past summer where she designed the sets for *Grease*. Michelle earned her bachelor's degree in theatre at the Ohio State University and her MFA degree at the University of Arizona in Tucson. She has been a member and held various leadership positions with the United States Institute of Theatre Technology (USITT) since 2001.

Dr. Kurt Gerard Heinlein Professor of Theatre, Coordinator of Acting. Kurt is a working member of AEA, SAG-AFTRA, ATME (Theatre Movement Educators), FDC (Fight Directors Canada), and USA (Stunt). Kurt has worked extensively since

completing his MFA in Acting from the Cincinnati College-Conservatory of Music (CCM), with union performance credits that include New York, national tours, national concert tours, regional theatre, daytime drama, film, commercial print, and numerous national SAG- AFTRA television spots. His movement, stunt, and combat work/ stunt coordination are seen in feature films, daytime drama, national commercials, and in professional and educational theatre circuits throughout the nation. He stays very active as a union performer and stunt coordinator. Kurt received his Ph.D. from Louisiana State University. A lifelong environmental activist, he has earned several grants and awards for his work in Green Theatre. He has published *Green Theatre: Promoting Ecological Preservation and Advancing the Sustainability of Humanity and Nature (book)*, *Evangeline Drowning (play)*, and a number of journal articles. Kurt recently received a Missouri State University Foundation Award for Teaching Excellence.

Dr. Christopher Herr joined the faculty in 2005 and currently teaches courses in theatre history and dramatic literature as well as Introduction to Theatre and Script Analysis. His published works include *Clifford Odets and American Political Theatre* as well as an essay on satire in modern theatre in Blackwell's *A Companion to Satire*, on American political theatre in *The Oxford Handbook of American Drama*; in "To Have or Have Not"; *New Essays on Commerce and Capital in Modernist Theatre*; and in *American Playwrights of the 1930s*. A chapter on American director Harold Clurman in *The Director in the Company* is forthcoming (2019). Dr. Herr holds a Ph.D. in Drama from the University of Toronto and an MA in English from the University of Toledo, and has worked as a director, dramaturge, and playwright in both the United States and Canada.

Azaria Hogsans holds an MFA from Texas Woman's University which expanded her research of dance as a means of social change with an emphasis on black modern dance. As the Artist in Residence at Missouri State University, Azaria teaches dance appreciation, contemporary, jazz, contact improvisation, alternative formats, dance history, composition, and West African dance forms. She has presented her works at several conferences including the Women in Dance Conference, Symposium on Performance of the African Diaspora as Social Change Conference, American College Dance Association South-Central and South-East Conferences, the World Dance Alliance Conference Puebla, Mexico, the Denton Black Film Festival, among other conferences. She has also performed at the Merge Concert at Sundance Square in Fort Worth, Texas, Collin College's Dance Fusion in Plano, Texas, Sant'Agata Central Plaza in Sant'Agata, Italy, UNT's Gospel Meets Jazz Concert in Denton, Texas to name a



**TACO
BELL™**

**MELTY.
CHEESY.
CRUNCHY.**



**VISIT YOUR LOCAL TACO BELL® TODAY!
601 SOUTH NATIONAL
SPRINGFIELD, MO**

DORITOS AND DORITOS LOGO ARE TRADEMARKS OWNED BY FRITO-LAY NORTH AMERICA, INC. MTN DEW, MTN DEW BAJA BLAST, THE MTN DEW LOGO, THE MTN DEW LANDSCAPE AND A TROPICAL LIME STORM ARE TRADEMARKS AND REGISTERED TRADEMARKS OF PEPSICO, INC. AT PARTICIPATING LOCATIONS FOR A LIMITED TIME. © 2017 TACO BELL IP HOLDER, LLC

few. She has brought the art of dance to local schools including Putnam High School in Putnam, Georgia and Lee Elementary School in Denton, Texas through community outreach programs and residencies. Most recently Azaria has been published in the Journal of Dance Education in practice (DEip) and will be published in the Journal of Dance Education (JODE). Azaria's interests extend from performance and choreography to publications and community outreach in her process of making and presenting dance.

Anna Hunt supervises student employees and lab classes in the construction and installation of scenery for Missouri State University's theatrical season. Anna also serves as Scene Shop Supervisor for Tent Theatre. Some of Anna's previous experience include Properties for *The Pirates of Penzance*, *The Odyssey*, *My Fair Lady*, and *Unnecessary Farce*; Paint Charge for *Hair*, *Rigoletto*, and *Cucumbers*; and Carpentry for *Little Shop of Horrors*, *Romeo and Juliet*, and *Sweeney Todd*. Anna holds a Bachelor of Science of Education in Theatre from Missouri State University. Anna thanks her husband Tom, and her family for their support.

Heather Chittenden-Luellen is Music Director/ Accompanist for the BFA Musical Theater program and the Department of Theatre & Dance. She joined the staff of Missouri State University in 1996. Heather has served as Music Director for mainstage productions since 2003 and Tent Theatre musical productions since 1998. She serves as Music Director for the New York Senior Showcase held each spring. In addition to her teaching duties, she also serves as alumni liaison for the department, providing a central contact for MSU alumni working all over the world. Select recent mainstage Music Direction credits include: *Amelié*, *bare the musical*, *Heathers*, *Pippin*, *Legally Blonde*, *Dogfight*, *City of Angels*, *The Pajama Game*, *Cabaret*, *Noah's Ark*, *White Christmas*. Select recent Tent Theatre Music Direction credits include: *Catch Me If You Can*, *Grease*, *The Drowsy Chaperone*, *Cry-Baby*, *Nice Work If You Can Get It*, *She Loves Me*, *All Shook Up*, *My Fair Lady*, *Hairspray*, *Damn Yankees*. Heather's other credits include Music Director for Broadway Unlocked's #Giveback Concert 2018 & 2019 (New York), Kyle Dean Massey's solo cabaret at Feinsteins's at the Nikko; *Actor*, *Lawyer*, *Indian Chief*, a musical by Craig Carmelia and David H. Bell, workshoped at the National Alliance for Musical Theatre Festival of New Musicals (NYC) and premiered at Goodspeed Musicals; pianist/music director for many productions in local community theatres; local keyboardist for national tours of *White Christmas*, *Beauty and the Beast*, and *Titanic*.

Dr. Carol J. Maples is a Professor and Coordinator for the BSED Speech & Theatre program. She

is also Director of Giving Voice, a nationally recognized interactive theatre troupe that addresses various issues of diversity and oppression. Dr. Maples has taught Acting, Directing, Pedagogy, Teaching Speech and Theatre, and Script Analysis. While at MSU she has directed shows such as *West Side Story*, *Hedda Gabler*, *Twelve Angry Jurors*, *The Love Song of J. Robert Oppenheimer*, *Proof*, *Clybourne Park* and *Crimes of the Heart*. Additionally, she has directed numerous productions for Tent Theatre, including *The Boys Next Door*, *Anything Goes*, *Noises Off*, *Hairspray*, and *The Drowsy Chaperone*. Dr. Maples has also been a guest director at Springfield Little Theatre. She has been seen on stage in *The Good Body* and in the web series, *A Little Help*. Dr. Maples is Past-President of the Speech and Theatre Association of Missouri and has served two terms on the Board of Governors. She is a published author and has presented at various state, national, and international conferences. Most recently she was given the MSU Foundation Award for Service. She recently completed work on the new Dance and Theatre Fine Arts standards for the state of Missouri.

Samantha Morrow is the Costume Shop Manager. Samantha's previous credits include Costume Design for *She Loves Me & All Shook Up* and Wig Design for *Hairspray* at Tent Theatre. Costume Design for *The Rocky Horror Show*, *Good People*, and *Killer Joe* at Springfield Contemporary Theatre. Costume Shop Manager and Costume Designer for *The Odd Couple* and *The Curious Savage* at Maples Repertory Theatre. Costume Intern at The Williamstown Theatre Festival. Samantha is a BFA Theatre Design Technology graduate from Missouri State University.

Zipporah Peddle is a versatile singer and teacher whose dynamic career has taken her throughout the world. She has an MM degree in Vocal Performance from the University of Nevada, Las Vegas, a BM from Memorial University, and studied commercial vocal pedagogy at Shenandoah University and Baldwin Wallace University. Ms. Peddle spent six years as lead vocalist in Cirque du Soleil's top selling production show, "O". She has performed in numerous musicals, concerts, cabarets, and recitals, at venues throughout Canada and the U.S. Favorite roles include Kate in *Kiss Me Kate* (Nevada Conservatory Theater) and Tiffany in *I Was Looking at the Ceiling, and Then I Saw the Sky* (Long Beach Opera). Ms. Peddle toured internationally with the Nathaniel Dett Chorale and has worked as a production vocalist and guest entertainer for various cruise lines. She most recently appeared in the world premiere of *La Sorgente*, a collection of art songs for soloists and orchestra, at the Ford Theatre in Los Angeles. Ms. Peddle has maintained private voice studios in Las Vegas and Los Angeles. She has appeared as a speaker for NATS, NATS (LA chapter), The Voice



printing & graphics

www.TheCopyShoppe.com

DESIGN ▶ **PRINT** ▶ **MAIL**

Find, Keep & Communicate with Your Customers

■ **TRADE SHOW & PROMO ITEMS**

■ **BANNERS & WIDE FORMAT**

■ **MARKETING & MAILING**

■ **BINDERY & FINISHING**

■ **GRAPHIC DESIGN**

■ **PRINT & COPY**

**Real People
Real Service**

*We sweat the small stuff...
so you don't have to.*



1446 E Sunshine St
Springfield, MO

417.887.5999

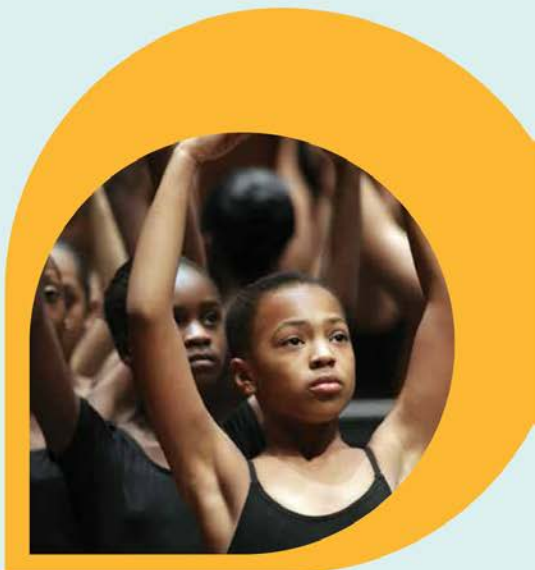
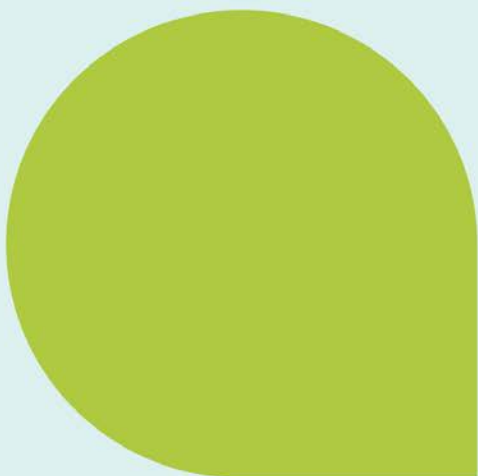
Foundation (SoCal chapter), and has presented research for PAVA. She is a proud member of Canadian Actors Equity, NATS, and the Voice Foundation. Ms. Peddle is currently an Artist in Residence with the Musical Theater program at Missouri State University.

Joseph Price is Department Head for Missouri State University Theatre and Dance. He has worked as a director, actor and fight choreographer throughout the country. He is a founding member of A Red Orchid Theatre in Chicago and the Oasis Theatre Company in Buffalo, where he served as associate artistic director. He was Program Director for the University of Minnesota/ Guthrie BFA Actor Training Program and spent 11 years at the University of Missouri, Kansas City/ Kansas City Rep where he was Associate Head of Acting for the MFA Actor Training Program. At the Unicorn Theatre in Kansas City he directed *Clybourne Park* the World Premiere of James Stills' *The Velvet Rut, Well, Painted Alice, Bright Ideas, Blue/Orange, Fuddy Meers, The Shape of Things, The Pillowman* and *The Lieutenant of Inishmore*. He directed *The Cripple of Inishmaan* for Kansas City Actor's Theatre and *A Steady Rain* for Riverside Theatre. In 2003 he directed the World Premiere of *Wild Boy, The Musical*, book by the head writer of *Sesame Street*, Lou Berger. He has directed numerous university productions including *Uncle Vanya, Enron, Killer Joe, Anything Goes, Present Laughter, Boesman and Lena, Tape, The Importance of Being Earnest, Polaroid Stories, American Clock, Mad Forest* and *The Circus Show. The Circus Show* is a rock musical that was developed as part of UMKC's Festival of NOW, with faculty from the Dell'Arte International School of Physical Theatre. In 2008 he worked closely with Carl Wilkens to create a work based on his book *I'm Not Leaving*, which detailed Wilkens' experience during the 1994 Rwandan genocide. *I'm Not Leaving* premiered at the 2008 Anne Frank Project and was live-streamed to Rwanda. Mr. Price spent 14 years at Perry-Mansfield in Steamboat Springs, Colorado serving as theatre faculty, Director of Theatre and Production Manager. He also teaches acting at the ARTSBRIDGE summer intensive. Acting credits include numerous productions in regional theatre, commercials and the CBS series *Dangerous Curves*. In the 1980s he starred as Choo Choo the clown in the Preschool Express Video Series. Joseph Price received his MFA from Southern Methodist University.

Mark Templeton is a 1987 graduate of Paris Jr. College and a 1989 BFA recipient from Stephen F. Austin State University in Nacogdoches, Texas. Prior to arriving at Missouri State University, Mark served the Palestine, Texas Independent School Districts for eight years as

Theatre Director and Chairman of the Fine Arts Department. While in Palestine he directed over thirty productions; eight earning regional honors and two receiving state recognition (*Wings* and *Into the Woods*). Other directorial credits include: *The Rimers of Eldritch, Johnny Belinda*, and *The Diviners*. Mark joined the Missouri State University campus community in August 1997 as Assistant to the Marketing Director of the Juanita K. Hammons Hall for the Performing Arts and moved to the Department of Theatre and Dance as Marketing Director in 1999. In 2003 he was promoted to Managing Director of Tent Theatre. He is an alumnus of the Commercial Theatre Institute of New York. Currently, Mark serves as the University representative and negotiator to Actors' Equity. In 2008 he served on a team that formally transitioned the Tent Theatre operation into a professional theatre company. Over the past several years his work as marketing director and creative consultant has been recognized in the local ADDY® Awards, the world's largest advertising competition. He has developed and instituted an annual fundraising/sponsorship program that has provided funding to the department's productions and student scholarships.

Dr. Kyle A. Thomas is an assistant professor of theatre and coordinator of the BA/BS theatre program. Kyle received his Ph.D. in Theatre from the University of Illinois, where he received departmental distinction for his work in dramaturgy and directing. Dramaturgy credits include *Cabaret* and *Oh What a Lovely War!*, both at the University of Illinois as well as devising and archival work on the original production of *Tom* by Philip Johnston in collaboration with the Amooey Theatre Company (Illinois) and Theatre at the Mill (Northern Ireland). Directing Credits include *It's a Wonderful Life: The Radio Play* (University of Indianapolis), *The Heart of Robin Hood* (Interlochen Center for the Arts), *Viva Verdi!* (Lyric Theatre @ Illinois), *The Play of Adam* (Metropolitan Museum of Art, NYC), *Floyd Collins* (The Station Theatre), *The Play about the Antichrist* (University of Illinois), and *Ah! Wilderness* (American International Drama Conference at Peking University, China). Kyle also maintains a profile as a professional actor with roles in *St. Louis Stories* at La Petite Theatre (New Orleans) and *ZACK* (St. Louis); *Gone Missing* at the Krannert Center for the Performing Arts (Urbana, Illinois); *Kissing* at New Theatre (Miami); and on-camera roles in the music video *Grand Bargain* by the Poster Children and the LA Hollyshorts selection: *The Karaoke Singer*. As a theatre scholar, Kyle specializes in the study of medieval theatre and applying historical practices to postmodern performance. Publication credits include "The Medieval Space: Early Medieval Documents as Stages," in *Theatre Survey* (2018); "Theatre in a Mobile World: Critiquing Convention and Calling for Innovation," for *Howlround*.



Ensuring the Arts for


The Kennedy Center

ANY GIVEN CHILD



com (2015); "Profile: Nedjeljko Fabrio's *The Reformers*," in *Ecumenica: Journal of Theatre and Performance* (2012); a chapter on Andrew Lloyd Webber in *The Palgrave Handbook of Musical Theatre Producers* (2017); and forthcoming publications: "The Performing Arts and Their Audiences," in *A Cultural History of Leisure in the Medieval Age (500-1450)* and *The Play About the Antichrist (Ludus de Antichristo): A New Verse Translation, Edition, and Commentary*, co-authored with Carol Symes.

Robert Westenberg, Professor of Theatre, Musical Theatre Program Coordinator. After a lengthy performing career that included work on Broadway and Off-Broadway, in regional theatres, national tours, television and film, Mr. Westenberg is now concentrating on teaching, directing and playwriting. He is perhaps best remembered for his roles in the original Broadway casts of *Into the Woods* as the Wolf and Prince, for which he received a Tony nomination and Drama Desk Award, *Secret Garden* as Neville Craven, and *Sunday in the Park with George*, where he replaced Mandy Patinkin in the title role. He also performed the role of Javert in the Broadway production of *Les Miserables*. Other Broadway credits include leading roles in *1776*, *Company*, *Abe Lincoln in Illinois*, *A Christmas Carol* and *Zorba*, for which he received a Theatre World Award. While known for his work in musical theatre, he has also appeared in numerous plays and classical works in theatres around the country. His national tour credits include *Zorba*, *Funny Girl*, and *The Full Monty*. His film and television credits are *The Ice Storm*, *Before and After*, *The Stars Fell on Henrietta*, *Mr. and Mrs. Bridge*, *Swift Justice*, *Central Park West*, and *Law and Order: SVU*. He has sung at Carnegie Hall in *The Gay Divorcee* and can be heard on several original cast albums. Mr. Westenberg is married to Kim Crosby and is the proud father of their three children. He is a graduate of the American Conservatory Theatre in San Francisco and completed his degree studies at the National Theatre Conservatory in Denver.

Sarah Wiggin is an Associate Professor of Theatre Performance at Missouri State and a founding member of the Resident Artist Ensemble (RAE), Springfield. She is also a company member of Agnes Table, a theatre ensemble devoted to using a collaborative process to build original performance material, which has performed at national and international venues. A member of AEA and SAG-AFTRA, Ms. Wiggin has worked with theatres such as The Shakespeare Theatre, Ford's Theatre, Everyman Theatre, Woolly Mammoth Theatre Company, The Folger, and regional companies nationwide. Locally, she has worked with SCT as Margie in *Good People*, Veronica in *God of Carnage*, and Becca in *Rabbit Hole*, and directed *Painting Churches* (all co-productions

with RAE), Sarah currently serves as Artistic Director for Tent Theatre. Sarah has directed professionally at Tent Theatre (*Steel Magnolias*, *You Can't Take It With You*, *Sherlock Holmes: The Final Adventure*), Venus Theatre in Washington, DC and assisted Aaron Posner in his Helen Hayes Award-winning production of *The Two Gentlemen of Verona* at Folger Theatre. Her own production of *Picasso at the Lapin Agile* earned Baltimore City Paper's #4 slot in their Top Ten: the Year in Theatre list. Her on-camera work includes *Law & Order: SVU* and *Gods and Generals*, among others. Ms. Wiggin earned her MFA in Acting & Directing from the University of Arizona.

Sarah Wilcoxon holds an MS in Communication from Illinois State University and an MFA in Dance from Florida State University. At Missouri State, Sarah works with both the dance and musical theatre programs as well as directs the wellness initiative in the Department of Theatre and Dance. Her interdisciplinary approach to making dances about community in relation to boundaries and borders necessitates collaboration outside of the dance field with actors, directors, filmmakers, musicians, visual artists, and theorists. Her collaborative works have performed on stages in musicals and concert dance throughout the Midwest and the Southeastern United States while her cross-disciplinary and co-created films have been screened both nationally and internationally. Sarah views somatic practice, mind-body connection, as an essential part of community building through dance. She is a STOTT certified Pilates teacher, and works to promote a culture of wellness in the teaching and practice of dance.

Cynthia Winstead holds a MFA from the University of Virginia. In addition to teaching classes in costume design, construction and history of costume and décor at Missouri State, Ms. Winstead designs and drapes professionally. Her costume designs have been seen Off Broadway in *Maiden's Progeny-An Afternoon with Mary Cassatt, 1906* (world premiere), *The Death in the Juniper Grove* (world premiere), *The Shattering of the Golden Pane*, and *The Hanging of Razor Brown* – all produced at the 59east59 theaters, New York, New York. She also designed the costumes for *The African Company Presents Richard the Third, Oak and Ivy, Conversations on a Dirt Road* (world premiere), *Robert Johnson, Trick the Devil, Cryin' Shame*, and *Before it Hits Home* – all produced by the St. Louis Black Repertory Company. Ms. Winstead's construction work has been seen on the stages of The Santa Fe Opera, The Glimmerglass Opera, The Repertory Theatre of St. Louis, The New York City Opera, The Repertory Theatre of St. Louis, Stages! St. Louis, The Mill Mountain Playhouse, and the St. Louis Shakespeare Festival.

EXPRESS

THE WORLD

Outside

OF U



@Natalie McNichols #China

@MOSTUDYAWAY

International.MissouriState.edu/StudyAway

YOUR MOM *called* SHE SAID SHE
WANTS YOU TO *live here.*

7 PROPERTIES TO CHOOSE FROM

BATTLEFIELD PARK • CAMBRIDGE PARK • CORYELL CROSSING

HIGHLAND PARK • MARION PARK • PALM VILLAGE • SHERWOOD VILLAGE



WITH COUNTLESS AMENITIES

VARIETY OF FLOOR PLANS

FREE INTERNET

SHUTTLE BUS TO MSU

TANNING BEDS

SWIMMING POOLS

FITNESS CENTERS

AND MORE!

WWW.TLCPROPERTIES.COM

TLC
PROPERTIES



ENJOY THE THEATER AS MUCH AS WE DO?

Ensure the arts most important to you and your family continue for years to come. Commerce Trust Company advisors can help structure a charitable giving strategy that meets your needs, maximizes tax benefits* and aligns with your overall financial goals.



Commerce Trust Company

Wealth | Investments | Planning

Contact a Commerce Trust advisor today.

417-837-5261

commercetrustcompany.com

NOT FDIC INSURED | MAY LOSE VALUE | NO BANK GUARANTEE

*Please consult a tax professional
Commerce Trust Company is a division of Commerce Bank.

© 2018 Commerce Bancshares, Inc.